

EXCLUSIVE REAL ESTATE

Chateau Křinec

CZECH REPUBLIC

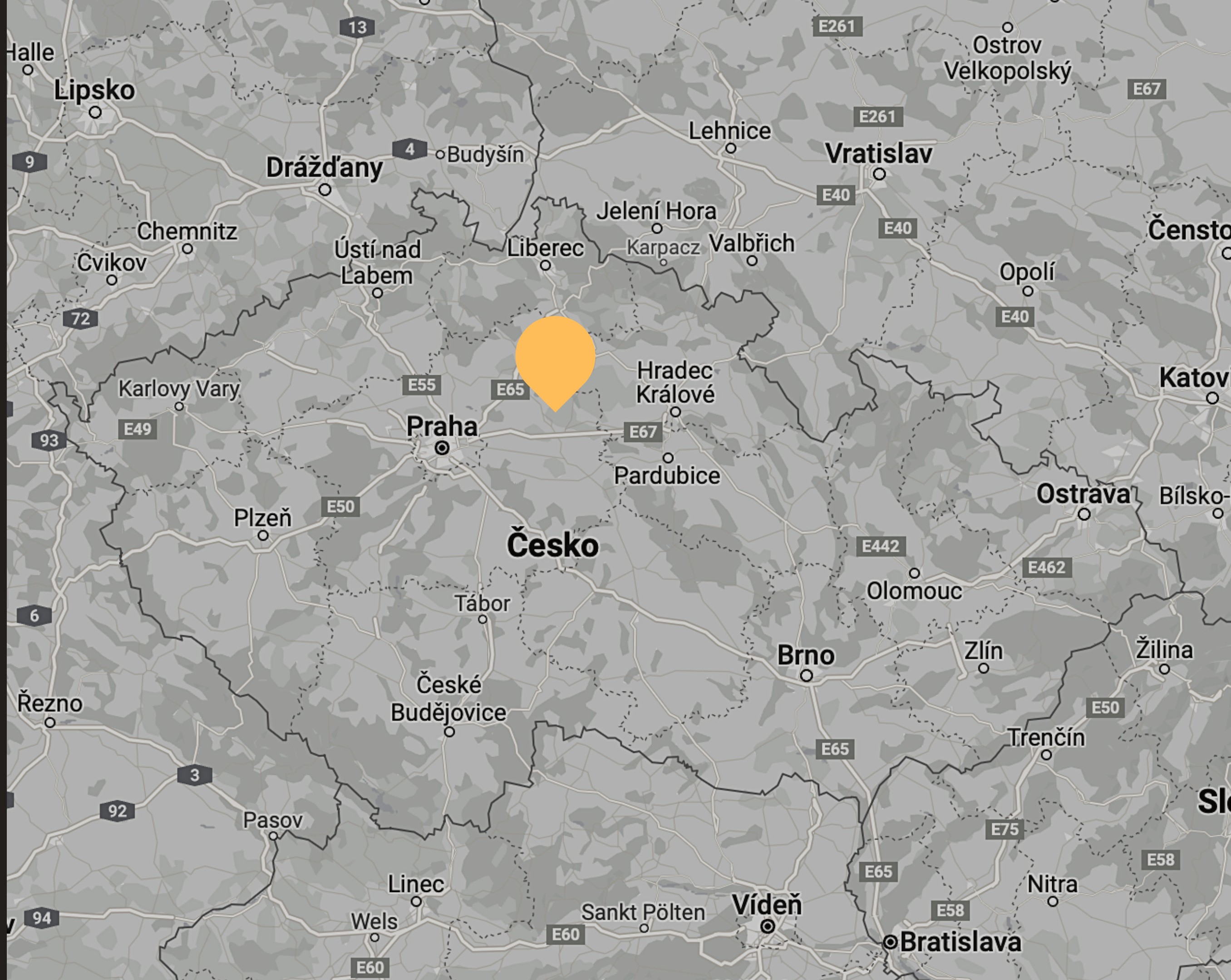




LOCATION

Chateau Křinec is located in the village of the same name 60 km from the capital Prague and between two regional centres - Nymburk and Mladá Boleslav.

Prague International airport is ca. 70 minutes away.



23.923 sqm

Chateau Křinec is situated north of the Křinec village.

The land of total 23.923 sqm is completely enclosed with two courtyard accesses.

Municipal park almost of the same size as the chateau land is adjacent to the main chateau from the southern side and connects it with the village center.

OUTBUILDINGS

Workshops, baroque granary, farm buildings and warehouses creates the backyard of the chateau.



PLANS

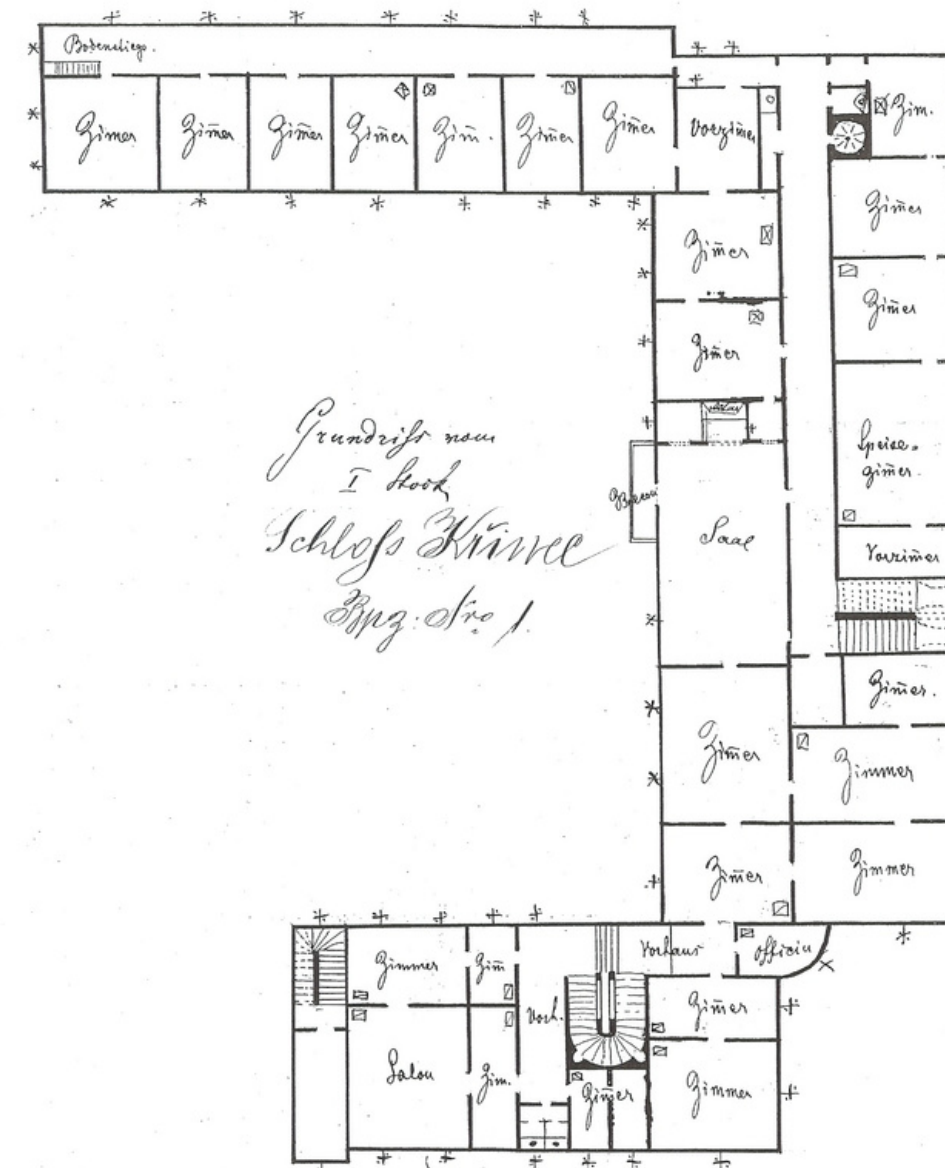
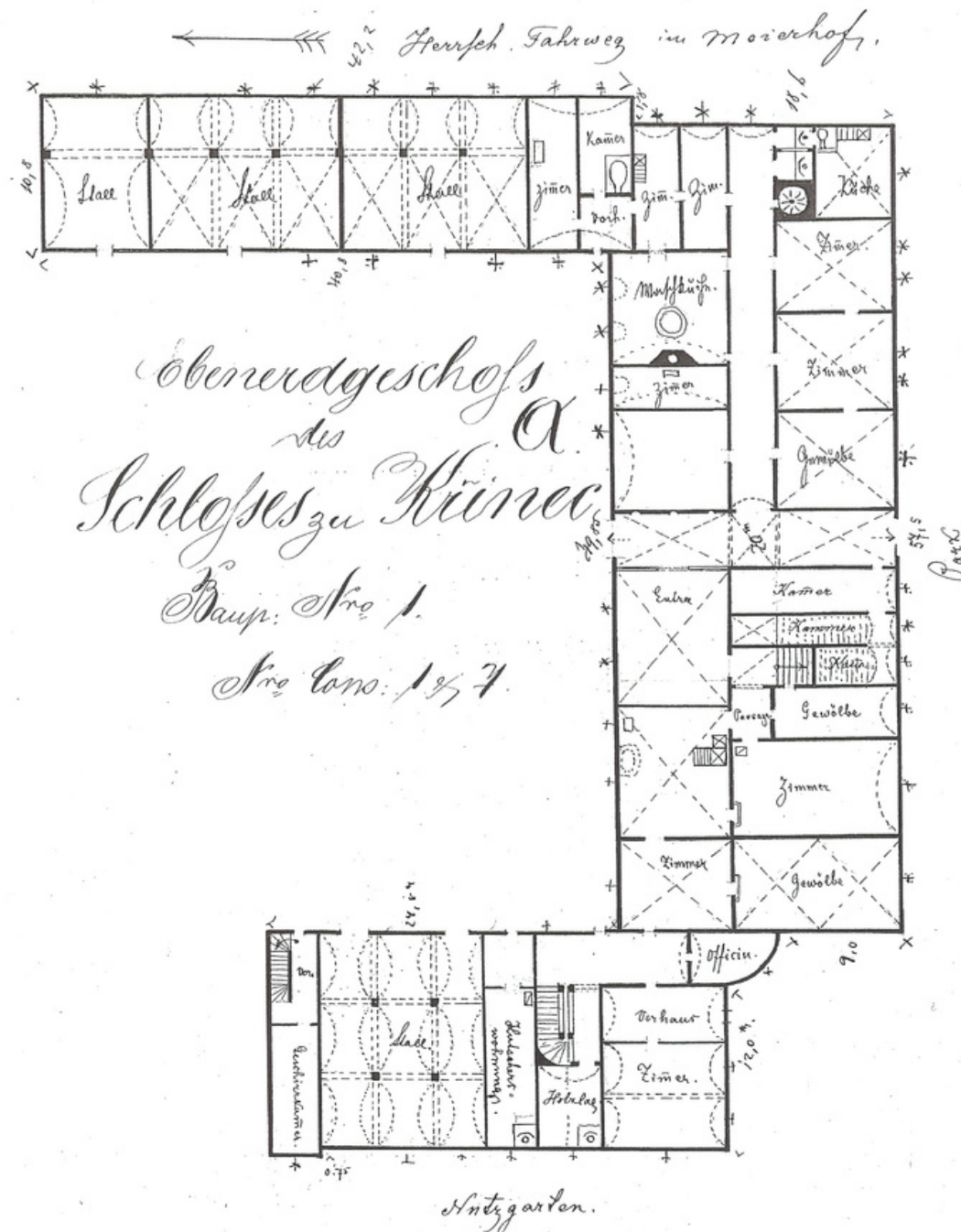
Chateau offers 5.223 sqm of living space over 3 floors.

The ground floor provides a formal "front to back" entrance hall, renovated café, toilettes and well preserved bakery facility from the 19th century.

Representative baroque two-storey hall dominates the first floor. Completely renovated blue chambers, formal dining room, picture hall and all other rooms offers relaxed feel with plenty of natural light.

2nd floor offers 11 spacious rooms.

Two staircases (main and service) lead from the groundfloor to the attic. Wing spiral staircase offers private access to the first floor and left chateau wing.





HIGHLIGHTS

Two-storey baroque hall

Blue rococo chambres

Baroque frescoes



UNLOCK ITS POTENTIAL

design the future

brewery

FILM STUDIOS

HORSE STABLES

residential living

SPA & HEALTH CENTER

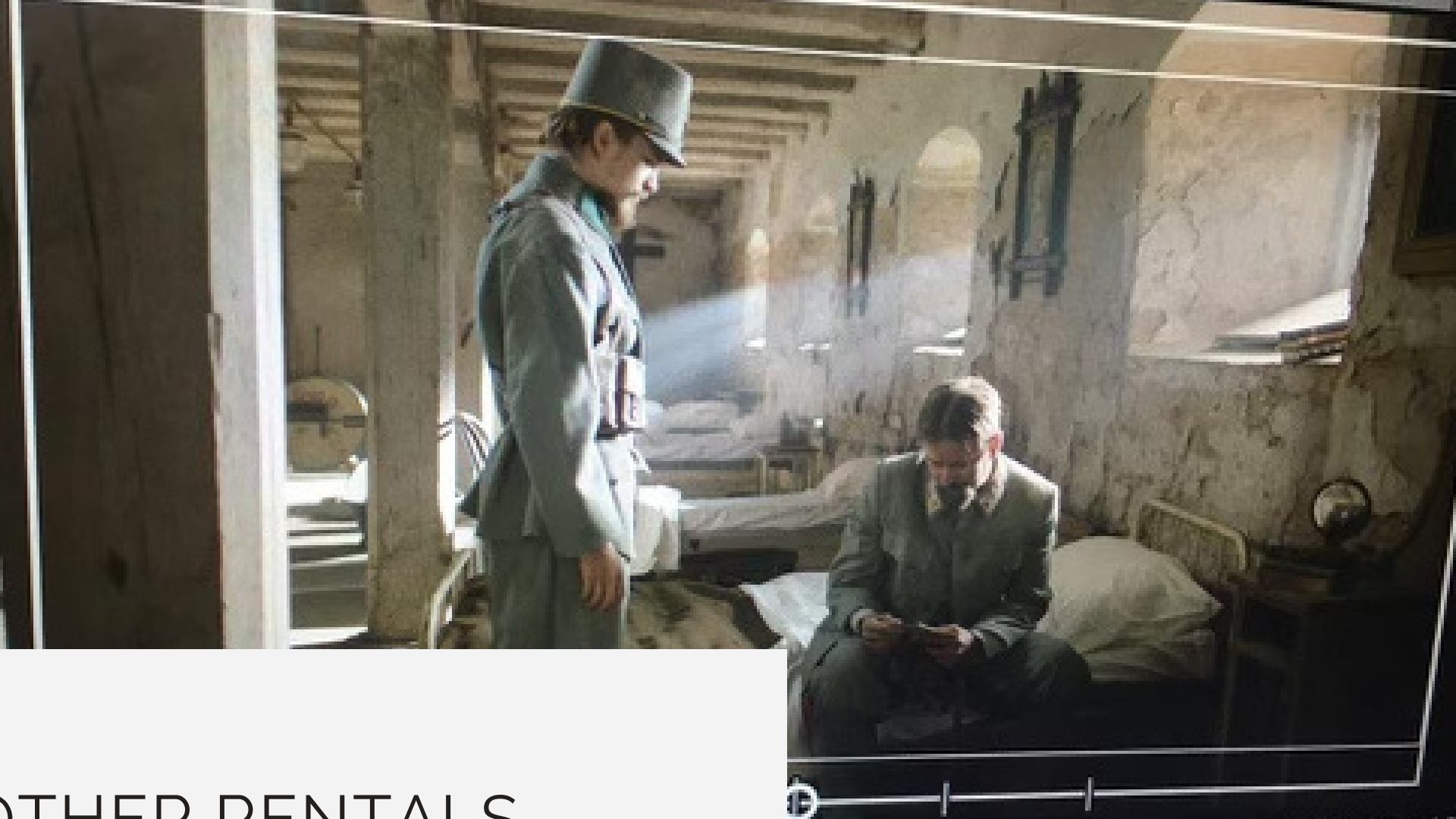
Art & design GALLERY

LUXURY ACCOMMODATION

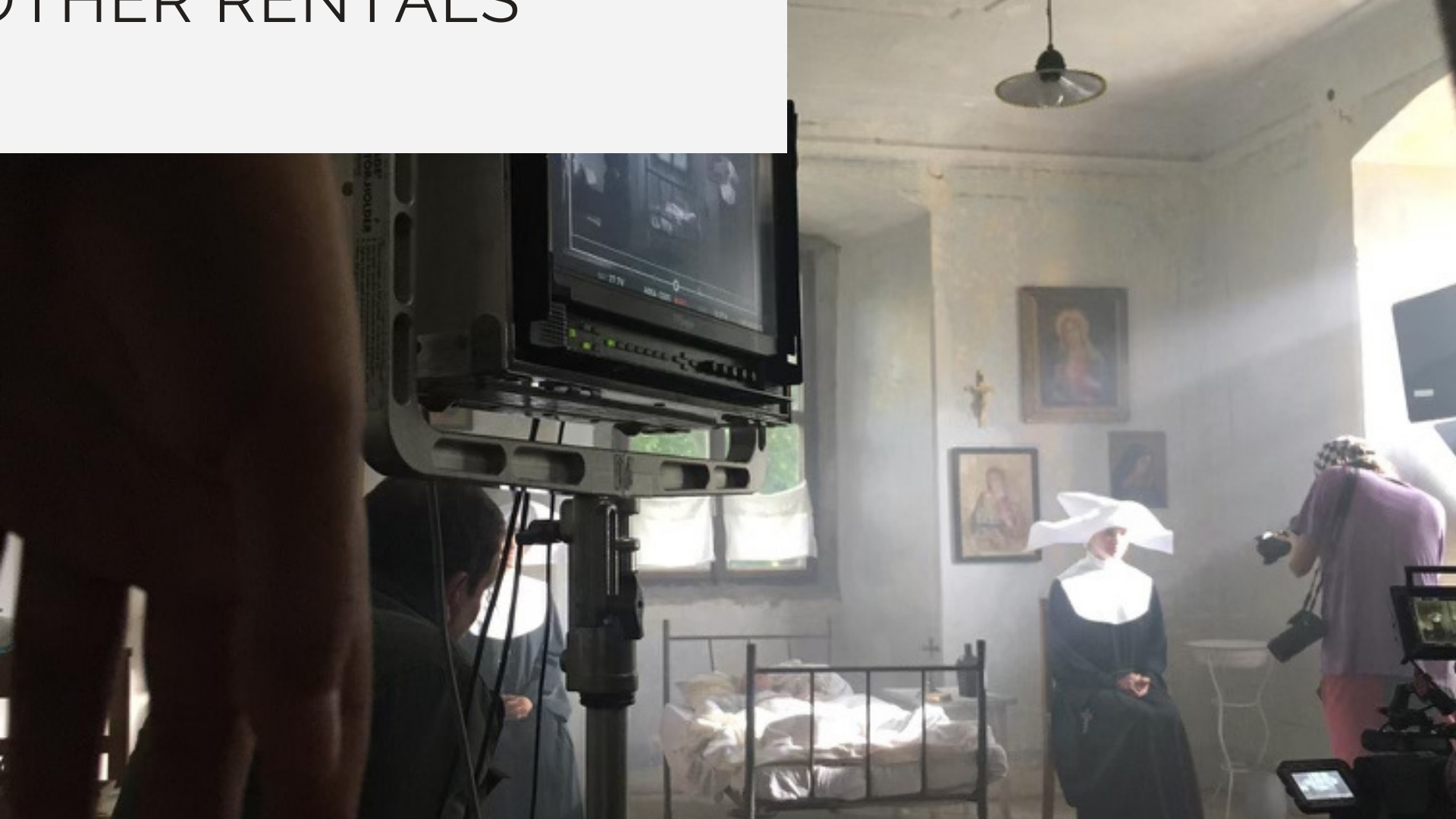


WEDDINGS & EVENTS





SHOOTING & OTHER RENTALS



THE LEGACY

learn about the past

Italian origin

Chateau Křinec was built in mid-17th century in early Baroque architecture style by Morzin aristocratic family with roots in northern Italy.

The castle was built according to the plans of Italian architect Carlo Lurago, one of the most famous architects of Baroque style in central Europe,

Nationalization

In 1945 the chateau was nationalized and came under the administration of the Czech state.

Private property

Since 2007 the chateau is in private ownership and step by step getting back its glory.